

## One-stop Accessory Solutions



Transport Rack



Emergency Gate



Sports Software



Movable Control Rack



Flight Case for Accessories



Optical Fiber Box



Video Matrix



Power Distribution Box



Rubber Cable Bridge



Industrial Operation Computer

## Parameters

### Technical Parameter

| Item                          | A99-6          | A99-10         |
|-------------------------------|----------------|----------------|
| Pixel Pitch                   | 6.25 mm        | 10 mm          |
| Brightness                    | 6000 nit       | 6000 nit       |
| Refresh Rate                  | ≥3840 Hz       | ≥15000Hz       |
| Color Gray Scale              | 65536 Level    | 65536 Level    |
| Power Consumption (Max./Avg.) | 650/217 W/sq.m | 650/217 W/sq.m |
| Viewing Angle (H/V)           | 160/125 deg.   | 160/130 deg.   |

### Panel Parameter

| Item                  | A99-6            | A99-10           |
|-----------------------|------------------|------------------|
| Panel Dimensions      | 1600×900×118 mm  | 1600×900×118 mm  |
| Module Dimensions     | 400 × 300 mm     | 400x300 mm       |
| Panel Weight          | 52 kg            | 52 kg            |
| Panel Material        | Aluminum Profile | Aluminum Profile |
| IP Rating             | IP65/IP65        | IP65/IP65        |
| Operating Temperature | -20 °C ~ +50 °C  | -20 °C ~ +50 °C  |

**Abgen**  
Trusted LED Supplier



**A99**

Stadium Perimeter LED Display

#### Absen Optoelectronic Co.,Ltd

18-20F Building 3A, Cloud Park, Bantian Huawei Base,  
Longgang District Shenzhen, 518129, P.R.China  
T: +86-755-89747399 E: absen@absen.com  
F: +86-755-89747599 W: www.absen.com

#### Absen Inc.

7120 Lake Ellenor Drive, Orlando,  
Florida 32809, USA  
T: +1-407-203-8870 E: info@usabsen.com  
F: +1-407-203-8873 W: www.usabsen.com

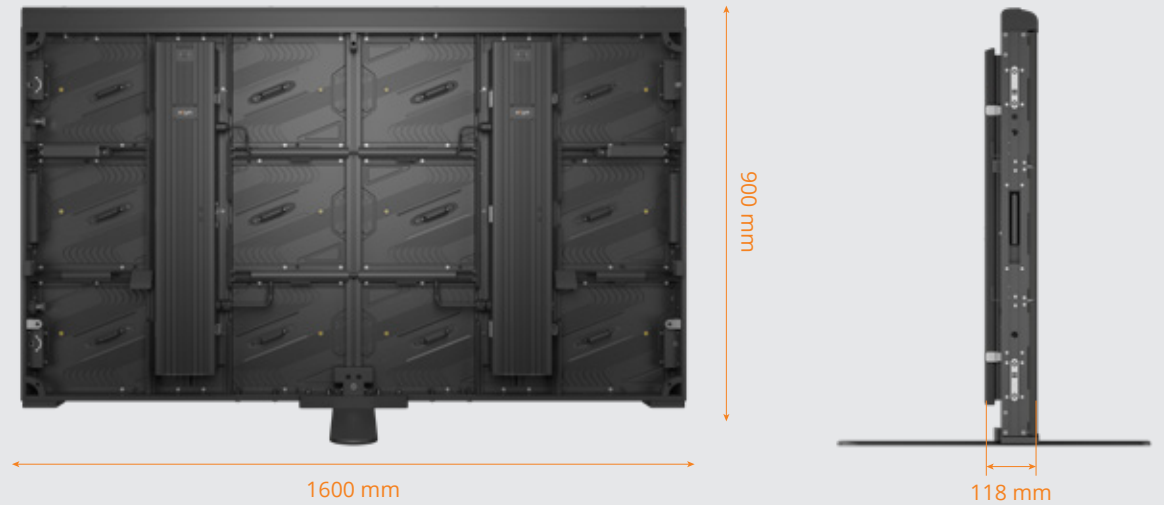
#### Absen GmbH

Hessenring 4c, 64546 Moerfelden-Walldorf (Frankfurt am Main),  
Germany  
T: +49 (0) 6105 718941-0 E: europe@absen.com  
F: +49 (0) 6105 718941-29 W: www.absen-europe.com

## Applicable Market Worldwide Sports Markets



## Features



The Most Stringent  
Technical Standards



Excellent Visual  
Performance



Stability & Reliably



Safe & Convenient

# The Most Stringent Technical Standards

Designed according to the most stringent technical standards for stadium perimeter displays in the industry, this product fully meets the technical requirements for.



Specification



Mechanical



Transportation



Processing and Control



Power Supply



Safety

# Excellent Visual Performance

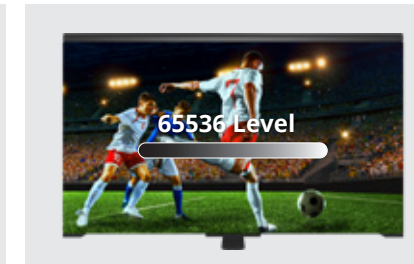
Aligned with Photographic & Broadcast Video Standards



Satisfies photography and live & recorded broadcast video requirements, providing clear, stabilized pictures.



The 160/125-degree super wide viewing angle ensures that the stadium cameras can capture high-quality pictures at all angles.



With low brightness control and high grayscale, the display and video effects remain excellent even at >20% brightness levels.



**3840+ Hz**  
High refresh rate



**4800+ : 1**  
High contrast ratio



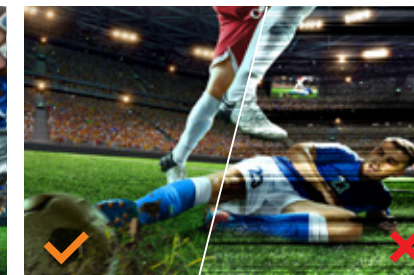
**65536**  
High grayscale



No ghost shadows



No moire effect



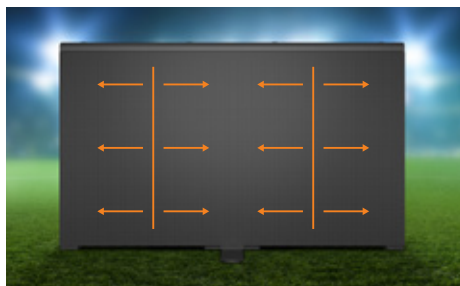
No scanning lines

## Stability & Reliably Ensured by Product Design



### Independent Waterproof Module

The power box is sealed, and the modules are independently waterproofed Preventing moisture from entering and damaging components.



### Parallel Module Connection

The modules are connected in parallel. Even if there is a fault, it will not affect the operation of other modules.

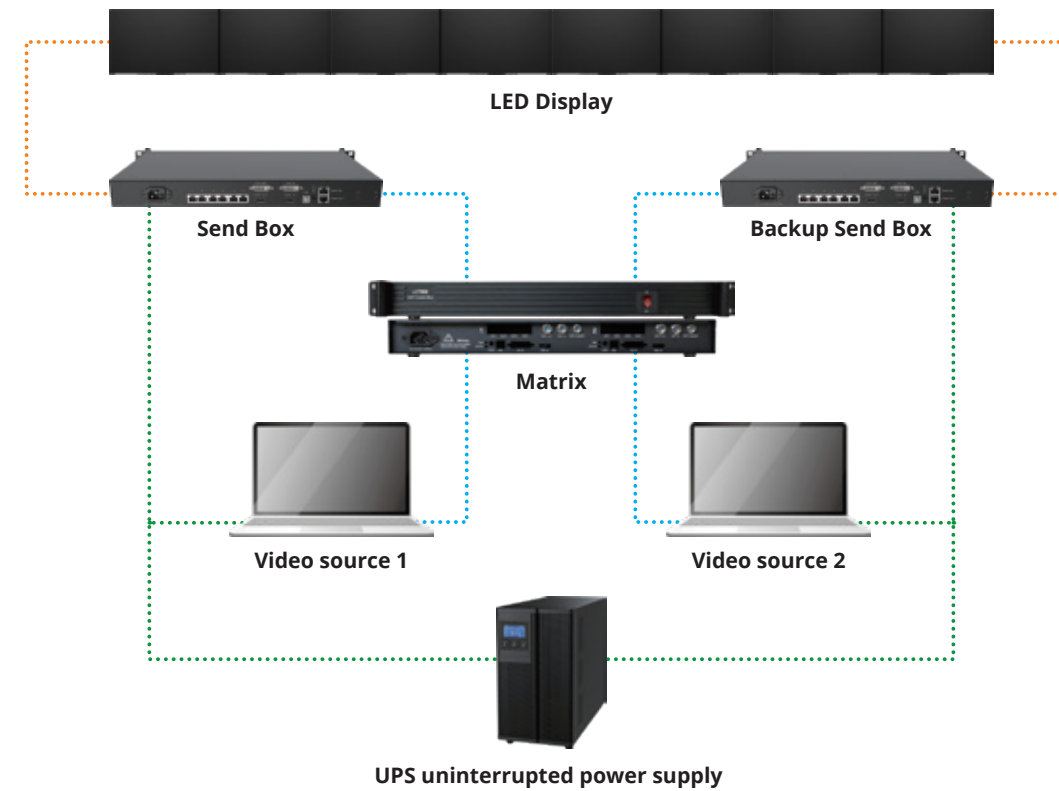


### Football Impact Test

By simulating a live football impact test, the stability of the product is ensured.

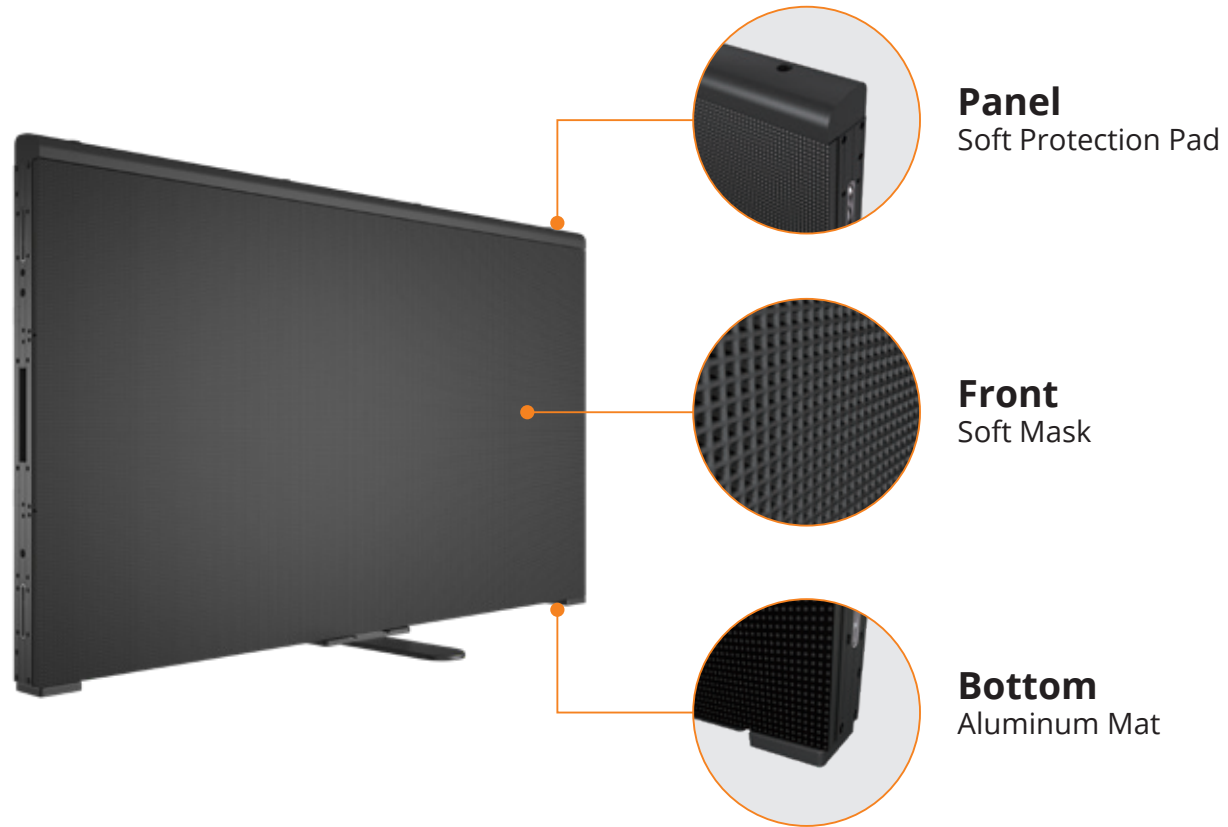
## Stability & Reliably Dual Backups

- **Powerful backup function:** The stability and safety of the display can be ensured.
- **Panel power supply backup design:** Provide continuous power so the display does not go black.
- **Supports dual system signal backup:** Dual computer backup, dual send box backup and dual cable backup.



## Safe & Convenient Player Protection Design

Player protection design provides reassurance against player injury and/or product damage.

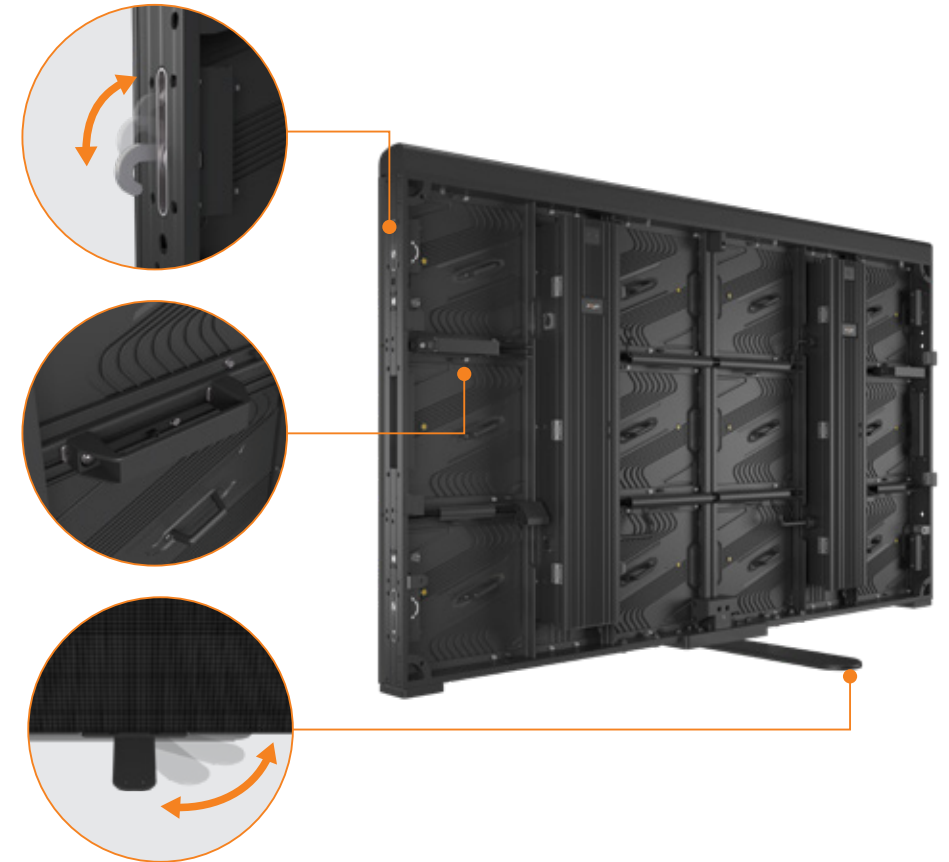


## Safe & Convenient Easy Installation

Convenient panel connections ensuring time saving quick assembly and disassembly on site

The panel is equipped with handle, which is convenient to use for handling and installation

90-degree rotating foot for fast & convenient set up



## Safe & Convenient Quick Maintenance

With independent waterproof modules, engineers can confidently replace modules even in wet weather environments. For quick module replacement the module is fixed with 7 screws, which can be assembled and disassembled from both the front and rear.



Front Maintenance

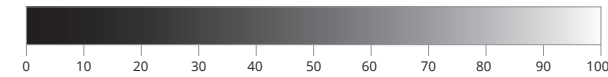


Rear Maintenance

## Safe & Convenient Multi-scenario Use

With quick adjustment of brightness, colour temperature and colour, the display can be used in all environmental conditions – daytime, nighttime, sunshine, rain, etc.

### Brightness adjustment

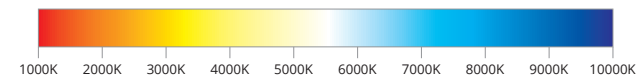


Brightness 20



Brightness 60

### Colour temperature adjustment

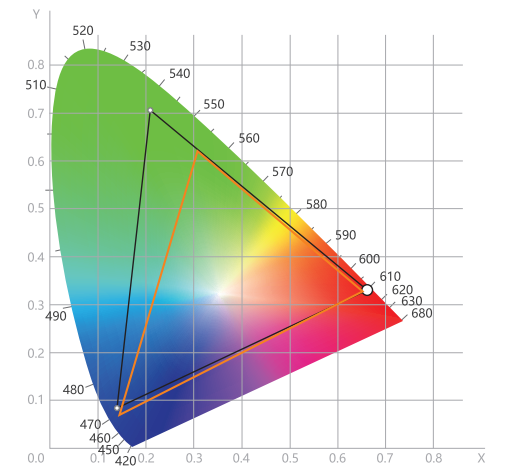


6500K



7500K

### Colour adjustment



— Rec.709 Colour gamut

— A99 Colour gamut



Before adjustment



After adjustment